



AG Talk



Starland County Agricultural Service Board Members

Chairman: Murray Marshall

Council Member: Norman Stanger

Council Member: Allen Avramenko

Council Member: Barrie Hoover

Council Member: Robert Sargent

Farm Member: Raymond Trout

Farm Member: Tracy Nelson

Agricultural Fieldman: Alan Hampton

Assistant Ag Fieldman: Dara Calon

Recording Secretary: Ross Rawlusyk



Upcoming Events

Morrin Ag Society Surface
Rights Informational Workshop
March 21st
Morrin Hall
10:00 –2:00
More info on page 11

C-2000 Club Meeting

Update on farm transportation
and safety
March 11th
Delia Hall
9:00-12:00

AFSC Growing Forward 2

Notice of Changes to 2013
AgriStability Producer Infor-
mation Meeting
March 12th
AFSC 111 Railway Ave W
1:30 –3:30

Reminder: Starland County
ASB has a Gallagher H3
Handheld RFID Tag Reader
available for county residents
to borrow. Contact Dara
Calon at 772-3793



In This Issue...

NEW Energy Efficiency
Sub-meter Program
Page 3

Prairie Shelterbelt
Program Page 4

Water Well
Decommissioning
Page 5

RTK and Ag Plastics
update Page 6

Fusarium Seed Testing
Alert Page 7

Equipment Sanitation
Guidelines Page 8

Ag Safety Week Page 9

Join the Water
Conversation Page 10

Surface Rights
Informational Workshop
Page 11

New Assistant Ag Fieldman

Jared Malansky has had an im-
portant role in the county for the
last five years, but has decided
to move on to a new career.
Good luck with your new job
Jared!

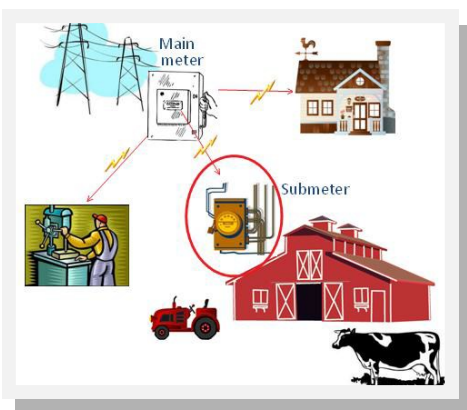
Dara Calon was hired to fill Jar-
ed Malansky's position as the
assistant agricultural fieldman.
Dara attended Olds College for
two years where she obtained a
Land and Water Resource diplo-
ma, then went on to the Univer-
sity of Lethbridge and received
a Bachelor of Science in Envi-
ronmental Science. Dara grew
up on a grain farm south of
Michichi, and has always want-
ed to be involved in agriculture.
She worked for Bayer Crop-
Science and BASF the past two
summers. Having grown up in
Starland County she looks for-
ward to working with farmers
on programs and workshops.



NEW Growing Forward

Energy Efficiency Sub-meter Program

This program aims to help producers obtain sub-metering service for on farm electricity/natural gas services. The sub-metering service will provide growers



with more knowledge of specific energy usages, which will help find the correct methods to improve energy efficiency. Producers who have at least \$10,000 in gross annual farm sales and/or an Alberta Farm Fuel Number are eligible. Up to \$2000 is approved for reimbursement. By installing a sub-meter, electricity from a certain building can be measured. Funding for this program is limited, and is on a first come first serve basis. If sub-meters have been previously installed they still may be eligible for reimbursement starting April 1, 2009. Applications to the program must be received by March 15th. For more information please contact Dara Calon at 403 772-3793.

Pest Corner Rusty Grain Beetle

This time of year growers may be experiencing problems with the common rusty grain beetle. Damage



to the kernels germ and endosperm is caused by both the larvae and adult beetles. In the case of heavy infestations grain beetles can cause the grain to overheat, as well as spread fungal spores throughout the grain. The beetle is a shiny reddish brown colour, roughly 2mm long, and is most active at or above 23°C. Females can lay between 200 and 500 eggs, and hatch quickly in 3 to 5 days. Larvae take 3 weeks to mature, and during this time feed on the germ end of the kernels. A moisture content of less than 12% and a humidity of less than 40% will insure an infestation does not occur. Being proactive and preventing an infestation by cleaning out the bin and using an insecticide are the best ways of control. After harvest, drying and cooling tough grain is an excellent precaution as well. If an infestation does occur, fumigation or admixture of an insecticide can be directly applied. Another option is to cool the grain to -10°C for 8 weeks to control the problem.



Prairie Shelterbelt Program

This is the last year that trees are available under the federally funded Prairie Shelterbelt Program, increasing the number of applications and putting a strain on tree stock. Trees are allocated on a priority ranking system, and not on a first come first serve basis. There is limited stock left which includes mixed hybrid poplar cuttings, mixed tree willow cuttings, hedge rose and snowberry. Statements were mailed out in February to clients to notify them of what they would and would not be receiving. It is suggested for clients to review these statements, and contact the Agroforestry Development Centre (1-866-766-2284) by March 22nd if they are not satisfied with a substitution, or if they wish to reduce their tree numbers. An out-of-stock letter will be sent to people who's orders will not be fulfilled. Applications will continue to be accepted until March 15th and are available at the Starland County office or online at <http://www4.agr.gc.ca>. Trees and ornamentals can also be ordered from Alberta Nurseries (403) 224-3544. For alternative sources of trees please refer to the links posted below:

- **CNLA - Canadian Nursery Landscape Association**

www.canadanursery.com

- **SaskPower - Shand Greenhouse (Saskatchewan residents)**

www.saskpower.com/shandgreenhouse



Big Rock Brew Burger

Ingredients:

- 1 lb medium ground beef
- 1/2 cup quick cooking rolled oats
- 1/4 cup Dark BBQ sauce
- 1/4 cup Big Rock Beer
- 1 medium onion, finely diced
- 3 garlic cloves, minced
- Spices as desired: onion, garlic, mustard, parsley, thyme, oregano, salt and pepper.

Method:

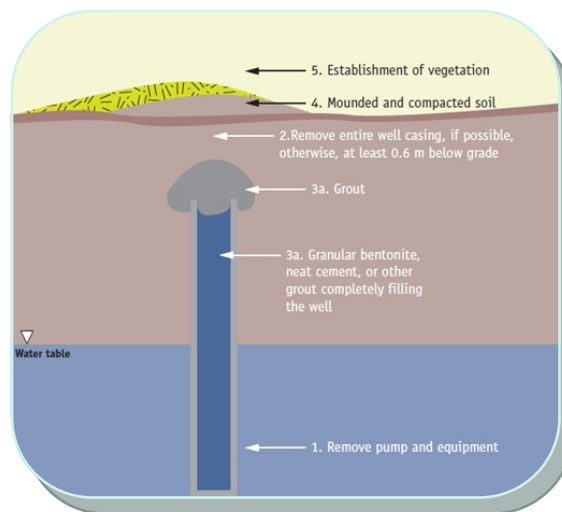
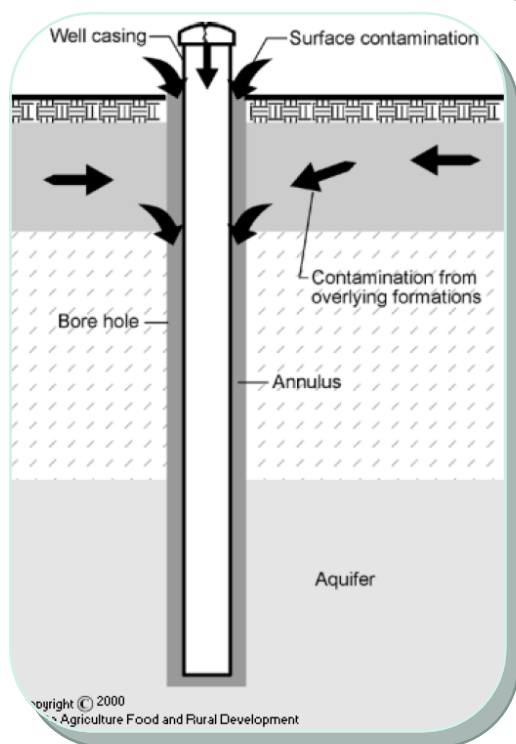
In large bowl, combine beef, rolled oats, Dark BBQ Sauce, Big Rock Beer, onion, garlic, mustard, parsley, thyme, oregano, salt and pepper. Mix lightly, but thoroughly to blend. Shape into 4 to 6 1/2" to 3/4" thick patties. Barbecue, broil or pan-fry using medium-high heat for 5 to 7 minutes per side (turning once) until instant thermometer inserted sideways into centre of patties reads at least 160 F (70 C). Serve on toasted whole wheat buns, topped with Speedy Cabbage Slaw as a relish. Makes 4 servings.

Recipe is supplied by Alberta Farm Fresh Producers Association. If you are a local producer and are looking for information visit www.albertafarmfresh.com.

Water Well Decommissioning in Starland County

Funding for water well decommissioning is still available. Abandoned water wells can pose a potential environmental risk to aquifers and ground water. By filling in these wells we can eliminate po-

ity. Dug wells can be filled with natural backfill and capped with compacted clay or bentonite. Be-



tential threats to our water supply. Wells are decommissioned by removing any pumps, casing or equipment. A grout material such as bentonite, sand-concrete mix or neat cement is used to fill and cap drilled wells. Compacted earth is mounded at the surface of the well to prevent water ponding, and vegetation is planted to increase stabil-

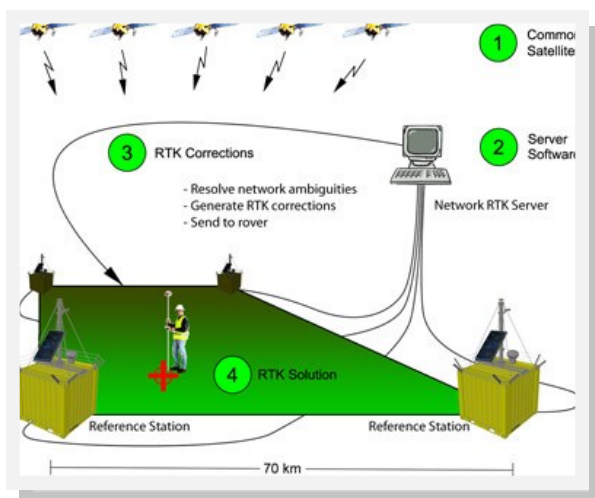
cause abandoned wells are a safety hazard and can threaten the water supply, it is encouraged for them to be decommissioned properly. An incentive of \$200 per well is offered. If you would like to have your wells decommissioned please contact Dara Calon at Starland County for more details (772-3793). For more information visit www.agric.gov.ab.ca

Did you know?

Alberta is estimated to have more groundwater than surface water. However, only 0.01 per cent of this groundwater is thought to be recoverable

RTK Real Time Kinematics

Starland County now has an RTK reference station available for farmers to use with their equipment. RTK will provide high accuracy positioning performance within 10-20 km of the base station situated in Morrin. The RTK station was installed in February, and farmers will be able to access it through a password and username, which should be ready for the 2013 season. For more information please contact Matthew Kreke at Starland County at 403 772-3793.



NOTE: Not all onboard systems are compatible with the RTK reference station.

Did you know?
You can use
your old grain bags
as a slip n' slide!

Ag Plastics Update

Green Acres Hutterite Colony near Basano is accepting agricultural plastics again, as per Merlin Plastics specifications of being rolled or baled, with less than 5% contamination by weight. Merlin Plastics will pay \$100.00 per metric tonne on truck loads with at least 50-100 bags. To set up a grain bag delivery contact Kevin at Merlin Plastics at 403-259-6637 Ext 101.



The county has a hydraulic Kirchner grain bag roller available at no cost. For more information on using the grain bag roller contact Dara Calon at Starland County 403 772-3793.

Other Options:

- 1) Deliver them to the Drumheller Regional Landfill for disposal at the rate of \$45.00 per tonne of material
- 2) Bury them on your property
- 3) Store the plastics until another disposal option arrives

Fusarium: Seed Testing Alert

Fusarium graminearum infected grain has been positively identified at trace levels in Starland County. *F. graminearum* is a seed-borne pathogen, and infected seed or feed, along with infested crop residues such as straw represent the greatest risks of introducing or spreading this pest. *Fusarium graminearum* is the causal agent of Fusarium Head Blight (FHB). Once established, FHB is a costly disease to deal with and left untreated can impact yield, grain quality, feed efficiency, malt barley production and negatively impacts seed potential.

Starland County in accordance with the Agricultural Pests Act of the Province of Alberta has a policy of zero tolerance on *fusarium graminearum* infected seed grain for use in our County. Due to the known occurrence of this pest in our County and the increasing presence of *F. graminearum* in Alberta in general, we advise that you test your seed for the presence of *F. graminearum* prior to planting and do not use this seed if *F. graminearum* is present.

Seed testing eliminates the unknown and is the first line of defense in reducing the potential spread of this disease. Seed testing along with



a seed treatment, crop rotation and complementary agronomic practices will go a long ways to reduce or prevent the establishment of not only *F. graminearum*, but a host of other potential crop diseases and pests. A standard *fusarium graminearum* screen cost \$37.00 and a germination and fusarium test cost \$48.00. Seed is the ultimate crop input. Testing it tells you everything there is to know about the seed you plan to use so that you can make informed decisions for the season and years ahead.

Additional information on *fusarium graminearum*, FHB and the Alberta fusarium graminearum Management Plan can be found at <http://www.agric.gov.ab.ca>

For additional information contact Alan Hampton or Dara Calon, Starland County Agricultural Fieldmen at 403 772 -3793.

Equipment Sanitation Guidelines

Starland County recognizes that movement of dirty equipment has the potential to introduce unwanted weeds and soil borne pests into and throughout our county. These guidelines are aimed at reducing this risk and are intended to act as a Best Management Practice for everyone involved in transporting equipment. This includes but is not limited to Agriculture, the Oil and Gas Industry, Utility companies, Private Contractors and Municipal Equipment.

As these are guidelines, enforcement is not considered feasible so they will be promoted by education, inspection and valid complaint investigation. Private landowners and industry are responsible for negotiating their own access and sanitation agreements with each other. Starland County will not get involved in private negotiations unless there is an enforcement issue regarding a positive Clubroot location or a Prohibited Noxious weed issue. Landowner and company agreements should clearly outline expectations and be monitored by the property owner.

If no written agreement exists between the landowner and the company and Starland County is called in to investigate a complaint our recommendation is final. Further, Starland County assumes no liability or responsibility if foreign weeds or soil borne pests are found on any property as a result of improper equipment sanitation.

PROCEDURES

Starland County requests that any equipment brought in from outside Starland

County be clean and free of soil and debris prior to entry. Pressure washing equipment is adequate to achieve this in most circumstances. If equipment is coming into Starland from a Municipality known to be infected with Clubroot, it is recommended that the equipment also be disinfected to minimize potential liability concerns.

Equipment that is moving between projects within Starland County should be free of soil and loose debris. Hand cleaning of the equipment is considered adequate in this circumstance unless the landowner has previously specified otherwise in writing with the company. It is important to keep in mind that equipment sanitation serves many purposes. Proper sanitation procedures will assist in preventing the spread of weeds, Clubroot and other soil borne diseases. If Clubroot is found within our County, cleaning requirements for movement may change.

Anyone involved in transporting equipment with visible dirt or mud into Starland County for the purpose of working in our area may be subject to stop work orders until the equipment is deemed suitable for transport.

Further information on cleaning equipment can be found on Alberta Agriculture's website under the title "Best Management Practices for Disinfecting Farm Machinery and Equipment to Prevent the Spread of Clubroot".

[www1.agric.gov.ab.ca/\\$department/deptdocs.nsf/all/prm12120](http://www1.agric.gov.ab.ca/$department/deptdocs.nsf/all/prm12120)

Ag Safety Week March 10-16



Secure your hook up
Check reflector strips
Display SMV Emblem
Check the lights
Plan your route
Check your flags
Drive Responsibly
Secure your load
Obey traffic laws

**PASS
WITH
CARE**



MAKE IT SAFE, MAKE IT VISIBLE



P.O Box 249 Morrin, AB T0J 2B0

(403) 772-3793

A safe farm is a great place to grow!



Alberta's water belongs to all Albertans. How it's managed for the future is vitally important to us all.

We want to hear all sides of the water conversation. By sharing your experiences and exploring ideas we hope to come to a common understanding about how best to meet our long-term needs when it comes to healthy lakes, hydraulic fracturing, drinking and wastewater systems, and water management.

We encourage you to join the water conversation in a variety of ways:

- Attend one of 20 community sessions
- Learn more, read Facts about Water in Alberta and the Conversation Guide
- Complete an Online Workbook (*available Feb 11-Mar 29*)
- Provide feedback through email
- Follow the discussion on our blog and Twitter

For more information visit
www.environment.alberta.ca

Community Conversations
All sessions are open to the public.
Doors open at 5 p.m. Facilitated conversations run from 5:30 to 8 p.m.

Tues, March 19
Drumheller Jurassic Inn
1103 Hwy #9 South

March 21st, 2013
Morrin Community Hall
10:00am-2:00pm
Light Lunch Provided
Cost: FREE

Speakers
Farmers Advocate
Agri-Trend Land
and Resources



Surface Rights Informational Workshop

Join us to learn more on surface lease contracts and other energy related contracts which can be general in nature. Clarity, certainty of terms and plain language are key to a successfully negotiated contract.

**Morrin and District
Ag Society**

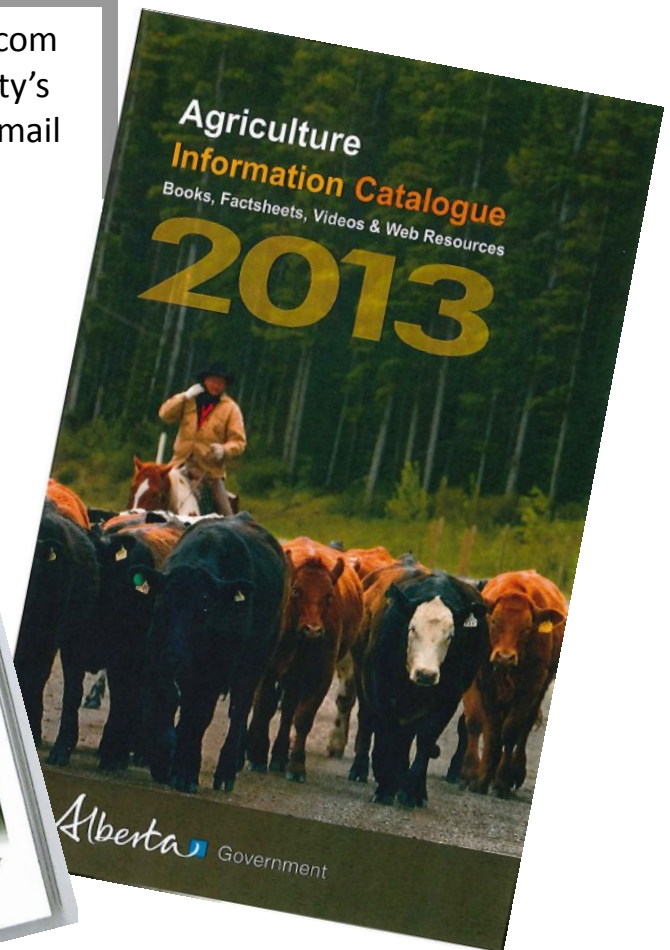
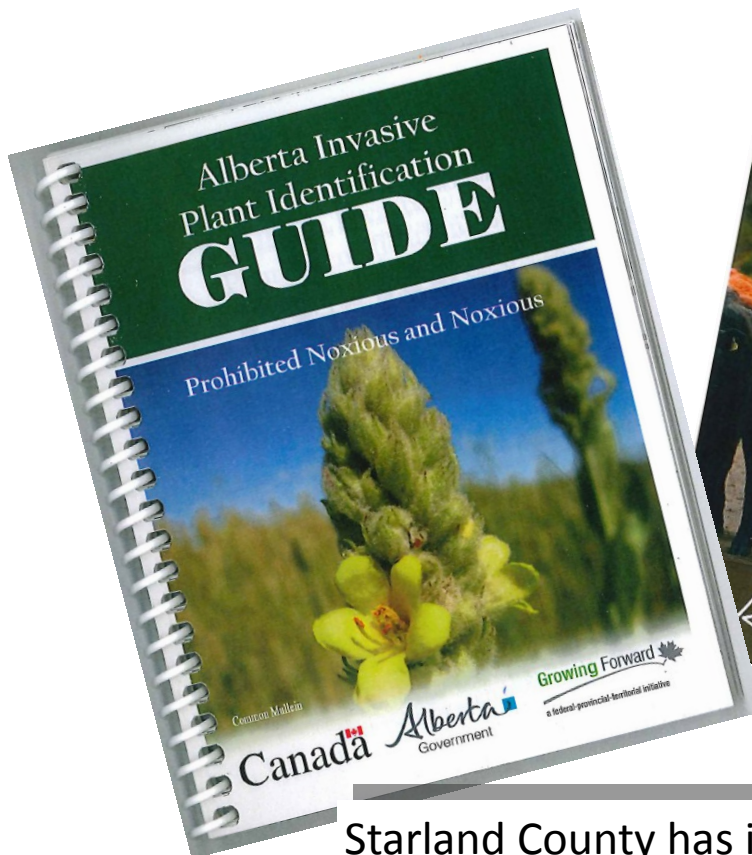


To register call Starland County 772-3793



AG Talk

To read online visit www.starlandcounty.com
If you would like to receive Starland County's
AG Talk newsletter electronically please email
dara@starlandcounty.com



Starland County has information available to residents. Stop by the county office to pick up your *Alberta Invasive Plant Identification Guide* and *Agriculture Information Catalogue* today!