



## AG Talk OCTOBER



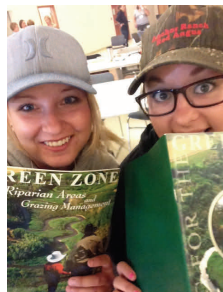
### Starland County ASB Members

**Chairman:** Murray Marshall  
**Council Member:** Steven Wannstrom  
**Council Member:** Allen Avramenko  
**Council Member:** Barrie Hoover  
**Council Member:** Robert Sargent

**Farm Member:** Ray Trout  
**Farm Member:** Tracy Nelson  
**Agricultural Fieldman:** Alan Hampton  
**Assistant Ag Fieldman:** Dara Calon  
**Recording Secretary:** Ross Rawlusk

## Grazing School

Dara Calon and Deanne Griffith attended the 10th Annual Women's Grazing School to learn about rangeland and riparian health. The school was held in Foremost this year. (Foremost, You blink you miss it, you stop you never forget it.)



## New Tool Launched to Identify Insects in Stored Grain

The Canadian Grain Commission (CGC) has launched a new web tool for identifying insects in stored grain. Producers can use the CGC's insect keys, available on the CGC website: <http://www.grainscanada.gc.ca/storage-entrepot/keys-cles/sgp-irg/sgp-irg-end-eng.htm>

If you have a community event that you would like advertised in the newsletter (free of charge) please contact Dara Calon at 403-772-3793.

## In This Issue...

Rural Water Connections  
Page 3

Grain Bag Zipper  
Page 4

Storing Canola  
Page 5

Delia History Book  
Page 6

Shelterbelt Tree Order Form  
Page 7

Starland Solar Incentive  
Page 8

Cow-Calfonomics  
Page 9

Agronomy Update  
Page 10

Rumsey Fall Supper  
Page 11

ASB Summer Tour  
Page 12

For the most up to date news from Starland County follow @StarlandCounty on Twitter



## Ingredients:

1lb lean ground beef  
2 tbs butter  
2 tbs flour  
2-1/2 cups milk, divided  
salt & pepper  
1 cup freshly shredded cheddar cheese, plus more for topping  
1 package taco seasoning  
10oz can Rotel, undrained  
15oz can black beans, drained & rinsed, Crushed tortilla chips



## Directions:

1. Brown ground beef in a large soup pot, season with salt and pepper, Drain and return to pot.
2. Melt butter in a saucepan over medium heat then whisk in flour and cook for one minute. Slowly whisk in 1 cup milk, season with salt and pepper, then switch to a wooden spoon and stir mixture until thickened, (3-4 min). Remove from heat then stir in shredded cheese until smooth. Set aside.
3. Add taco seasoning, rotel, black beans, cheese sauce, and remaining 1-1/2 cups milk into cooked ground beef then stir well to combine. Bring to a heavy simmer then turn heat down to medium and simmer for 10 minutes, stirring occasionally. Serve with crushed tortilla chips and more shredded cheese, if desired. Serves 4-6

## Starland County Rural Water Connections

Starland County has built a major network of rural treated water pipelines that currently serves many of our residents. The County is starting to plan for the next phase of water line development in anticipation of a new Federal Infrastructure Program expected in March of 2014. We want to know who would like to be connected to a rural system, and we want to know where the connections are still needed. If any landowners are interested in getting a pipeline connection to a rural system, please contact our office and let us know you would like to be added to the program planning for system design.

In order to secure your proposed site into the design phase of our next project, you need to submit a \$500.00 deposit along with name, address and legal location for the site you would like to get water to. We will follow up with a general water supply agreement, sign-up form and a general right-of-entry for access into the property owned by the landowner. The right-of-entry is required to facilitate project design and soils work required for environmental approvals.

The \$500.00 deposit will allow landowners to be included in the final project design phase. If the landowner wishes to withdraw from the project at any time up to and including the final contract signing, the County will refund the deposit amount. It's important to note that not all sites will work for a regional system, and if we simply can't include a property economically, the deposit will be returned.

Under the terms of the County's Water Supply Agreement, the total cost of water remains at \$17,500.00 for a water connection. A payment of \$8,500.00 is required within 90 days of the award of the project tender. The final total payment of \$8,500.00 will be required when the water service is ready to supply water to the landowner's property. The County uses a standard Water Supply Contract for all water projects within the municipality. Starland County water systems deliver a water flow of ½ gallon / minute or approximately 720 gallons / day or 21,600 gallons / month. The landowner must install a cistern on the property suitable for water supply purposes.

It is possible that some infrastructure funding might become available in 2014, and if you want to be included in the next planned round of rural water connections, we need to hear from you by **Friday, November 8<sup>th</sup>, 2013**.

If you're interested in a new rural water connection, please let us know. If you have any questions, please contact our office. A full copy of the Guidelines and Policy Direction for the Starland County Rural Water Supply systems is available at [www.starlandcounty.com](http://www.starlandcounty.com).

Ross D. Rawlusk  
Chief Administrative Officer Starland County  
Box 249 Morrin, Alberta T0J 2B0  
Telephone: (403) 772-3793  
Fax: (403) 772-3807  
Email: [info@starlandcounty.com](mailto:info@starlandcounty.com)



## The Grain Bag Zipper

Most experienced bumper yields throughout Starland County this year, causing the number of grain bags scattered around the County to increase significantly from previous years. Grain bags are an excellent, efficient option for storing large amounts of grain right in the field. However they do have their disadvantages, one being the difficulty in sealing and unsealing a grain bag to access and move grain, or check temperature. Most farmers use the classic 2x4's or pallets laid on top of the bag, leaving it semi-exposed to the elements as well as not achieving a perfect seal. Another option for farmers is the watertight "grain bag zipper" which was invented by Curry Industries based out of Manitoba. The Grain Bag Zipper kit sells for \$649.99, which includes everything needed to fasten the bag. The zippers are separate and range in price from \$34.00-\$38.00 depending on the size of the grain bag. This system saves time, and helps increase the quality of the stored grain. For more information or to order you can check out their website <http://www.grainbagzipper.com/>

### ***It's Easy as 1-2-3!***

#### **1. ONE PERSON No 2x4's Required!**

*The system uses two light, but durable, plastic Zipper Strips that easily snap together like the seal on a sandwich bag, trapping the grain tight. No electrical power or awkward 2x4's required.*

#### **2. ONE PASS Zips up in Seconds!**

*Feed the Zipper Strips into the Grain Bag Zipper and easily push it across the grain bag. The tool snaps the strips together, sealing the grain inside while also trimming the bag for a nice clean edge.*

#### **3. REUSABLE Reuse Again and Again!**

*The durable design allows for a strong seal every time as well as long lasting use. With proper care and maintenance the Zipper Strips will last for years and provide the same seal every time.*

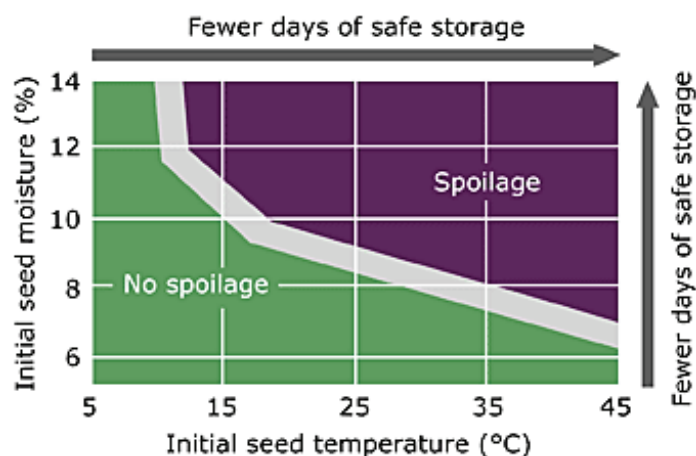


## Storing Canola: Check Every Bin!

Now that harvest is complete, farmers need to be aware of what moisture content and temperature canola was stored at. Canola has the potential to overheat due to its high oil content. Within the first four to six weeks following harvest it is important that all canola should be checked to insure a stable and cool temperature. Assuming that all canola is at risk is the safest way to go. Even cool and dry canola can overheat due to dockage and green seed, which create hot spots in the bin. Consistent monitoring of bins that are not aerated will help keep losses to a minimum. Even if canola was stored at a low moisture content, it still has the ability to “sweat” and overheat.

Monitoring bins by probing top and bottom hatches in more than one location will insure you are getting a good read on the bin. Removing a portion of canola from the bin will also allow you to check more thoroughly, as well as decrease the temperature of the canola by exposing it to air. Long term storage conditions are temperatures throughout of 15°C or lower, and moisture at or below 8%.

You can find more information on storing canola on the Alberta Canola Producers Commission website [www.canola.ab.ca](http://www.canola.ab.ca), or on the Canadian Grain Commission website [www.grainscanada.gc.ca](http://www.grainscanada.gc.ca).



## Palliser Web Map Released for Public Use

Palliser Regional Municipal Services has been busy developing an interactive online mapping tool for the associated municipalities in the region. “We are excited to announce that we now have an accurate and reliable internet webmap that is accessible to municipalities for not only Council and administrative planning functions, but a public side that allows landowners simplified access to property information across the Palliser region” stated CEO Brad Wiebe. You can access the tool at [www.palliserwebmap.ca](http://www.palliserwebmap.ca)

## Delia and District History Book

A History Book Committee has been formed to compile and publish stories of those residing , or who have formerly resided (from 1970 to date), in the present day boundaries of the Delia School District. Submissions of written and pictorial family histories are requested by November 1, 2013. The committee welcomes all stories and copies of family photos but does retain the right to edit submissions. Your stories may be submitted to any of the below listed committee members. There will be a booth for a collection of stories at the Delia Fall Fair on October 19, 2013.

For more information please email:  
[deliahistory@magtech.ca](mailto:deliahistory@magtech.ca)

Or, contact one of the following committee members:

Bev: 403-364-2260

Linda: 403-364-2122

Art/Pat: 403-364-2168

Norlene: 403-364-2401

Denise: 403-364-3798

Stan/Loralee: 403-364-3793

Keith/Gloria: 403-823-8851

**\*\*The Craigmyle Historical Committee is currently collecting stories for publication of a history book of their area. \*\***

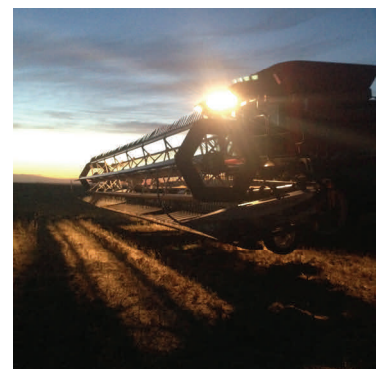
## Free Rip-Rap

The Village of Delia has large chunks of cement and asphalt that could be used for rip rap in lagoons/dugouts. Free of charge, must have equipment to haul it away. For more information please contact Caroline Siverson at (404) 364-3787.

## Make it Safe, Make it Visible

### Pilot Project a Success

Starland County's Community Peace Officer Brenda Gallagher would like to thank our local farmers for making our farm safety pilot project "*Make it Safe, Make it Visible*" a great success. Farmers seen using proper signage and lighting were given a safety pack. Brenda would like to personally thank Starland Colony for going above and beyond what was required by installing additional lighting on the roofs of their pilot vehicles. Keep up the good work and see you in the spring!



## Alberta Nurseries Shelterbelt Program

The Alberta Shelterbelt Program has introduced a new tree seedling program available for County residents at a bulk rate. Trees will be shipped to Starland County and distributed in the spring. Orders need to be into the County by December 31st. Fill out this form and fax to 403-772-3807, stop by the County Office for a form or contact Dara Calon at 772-3793 to place an order. Deposit may be required depending on size of order.

<b>BULK SEEDLING PROGRAM</b>		
Alberta Shelterbelt Program	County:	
P.O. Box 446	Address:	
Bowden, AB	Phone number:	
T0M 0K0	Name:	
Phone: (403) 224-3544 Fax: (403) 224-2455		
Email: seed@telusplanet.net		
<b><u>FIELD SHELTERBELT SPECIES</u></b>		
Seedlings in bundles of ten	<b>Price Each + GST</b>	<b>Qty (# of bundles)</b>
<b>CARAGANA *</b>	\$1.00	
<b>VILLOSA LILAC *</b>	\$1.50	
<b>COMMON LILAC *</b>	\$1.50	
<b>LAUREL WILLOW **</b>	\$1.50	
<b>SHARP LEAF WILLOW **</b>	\$1.50	
<b>NORTHWEST POPLAR **</b>	\$1.50	
<b>SCOTS PINE **</b>	\$1.00	
<b>COLORADO SPRUCE **</b>	\$1.00	
<b>WHITE SPRUCE **</b>	\$1.00	
<b>DOGWOOD *</b>	\$1.25	
<b>GREEN ASH *</b>	\$1.25	
<b>MANITOBA MAPLE *</b>	\$1.25	
* Bare Root **Plug Grown		
<b><u>NATIVE SPECIES</u></b>		
<b>GREEN ALDER</b>	\$1.50	
<b>CHOKECHERRY</b>	\$1.50	
<b>TREMBLING ASPEN</b>	\$1.50	
<b>BALSAM POPLAR</b>	\$2.00	
<b>COYOTE WILLOW</b>	\$2.50	
<b>BEBBS WILLOW</b>	\$2.50	
<b>CANADA BUFFALOBERRY</b>	\$2.50	
<b>WOLF WILLOW</b>	\$2.50	
<b>SASKATOON</b>	\$2.50	
<b>PRICKLY ROSE</b>	\$2.50	
Plug grown available spring until fall		



# Starland Solar Incentive

## Starland County is a leader in Alternative Energy.

Starland County, through partnership with AMSC and Bullfrog Power has made available an incentive for solar installations within the County of Starland.

**Approved solar installations within the county will receive 40cents per watt of solar panel installed as an installation incentive.**

Maximum incentive amount is \$3000. Incentive will be paid on a first come first serve basis. As a condition of receiving the incentive Starland County asks that solar tracking be installed.

### Example One

Residential installation.

2000 watts Kyocera Panels

Enphase micro inverters

Approximate cost: \$8200

Incentive Received: \$800

### Example Two

Farm installation.

4410 watts Kyocera Panels

Sustainable Paralex Inverter

Approximate cost: \$21,000

Incentive Received: \$1,764

### Example Three

Farm installation.

8820 watts Kyocera Panels

2 Sustainable Inverters

Approximate cost: \$41,000

Incentive Received: \$3,000



**If you are interested please contact:**

Jordan Webber

587-795-0503

[jordan@starlandcounty.com](mailto:jordan@starlandcounty.com)





# Cow-Calfenomics 2013

Tools and Strategies for Better Decisions

## Risk Management and Profitability in the Alberta Cow-calf Sector

Date	Location	Venue	Time
November 25 <sup>th</sup> 2013	Vermilion	Vermilion Regional Center, 5021 - 49 Avenue	9:30 am-3:30pm
November 26 <sup>th</sup> 2013	Veteran	Veteran Community Hall, 403 Coronation Ave	
November 27 <sup>th</sup> 2013	Olds	Olds College, Student Alumni Center	
November 28 <sup>th</sup> 2013	Lethbridge	Country Kitchen Catering, 1714 Mayor Magrath Drive	

**Risk and Opportunity in Today's Markets** - Anne Wasko or Debbie McMillin - Market Analysts

**Measuring and Managing Calf Price Risk** - Alberta Agriculture and Rural Development

**Introduction to Futures, Options and Cattle Price Insurance** - Agriculture Financial Services Corporation (AFSC)

**Handing over the Reins - Transition on the Ranch** - Barrie Broughton QC TEP, North and Company LLP

**Accessing Capital - Yours and the Banks** - Alberta Agriculture and Rural Development

**The Future of Alberta's Beef Sectors: A Young Producer's Experience in Getting Established**

## How to Register

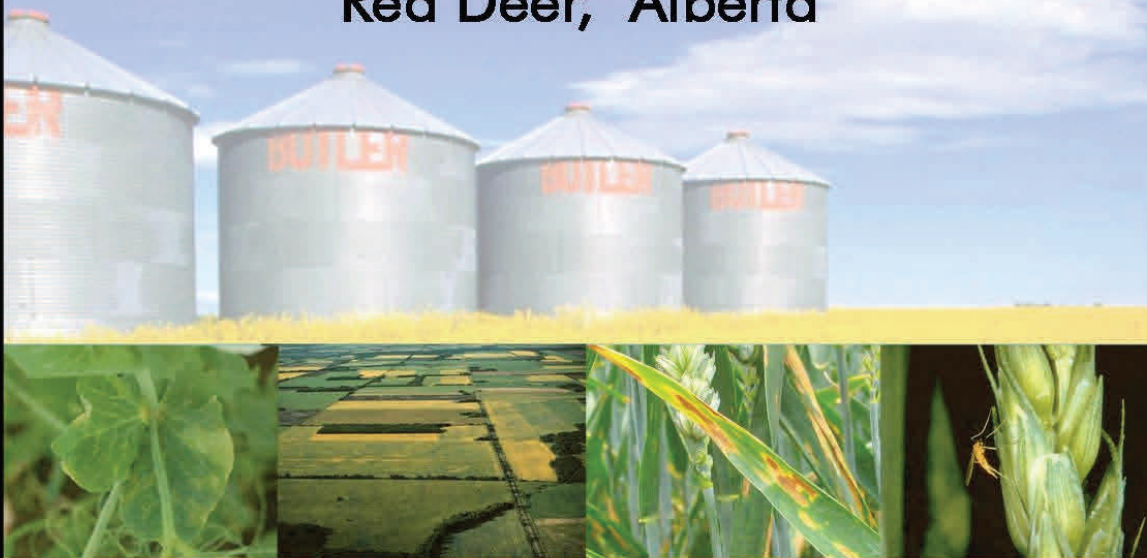
All participants are requested to register prior to Wednesday, November 20, 2013. Registration fee is \$25.00.

Lunch is provided with registration. **Registration for students is free** and compliments of Alberta Beef Producers. To register please call the Ag-Info Center at 1-800-387-6030



# Agronomy Update 2014

January 14 & 15, 2014  
Sheraton Red Deer Hotel  
Red Deer, Alberta



**“Timely agronomic information for  
producers & agronomists”**

**To register or for more information  
call the Ag-Info Centre**

**1-800-387-6030**

Government  
of Alberta ■



# RUMSEY FALL SUPPER



November 2, 2013

Supper 5-7

Dance 9-1

COME JOIN US  
FOR A TURKEY  
SUPPER WITH  
DANCE TO  
FOLLOW  
FEATURING  
CCMA  
NOMINATED  
BAND DOMINO!  
Tickets at the  
door:

Adults: \$15.00

Seniors (60+)

\$12.00

Kids 6-12 \$5.00

5 & under free

**SEE YOU  
THERE!**





ASB Summer Tour  
August 7th 2013

Thanks to everyone who came  
out, and we hope to see you  
again next year!

